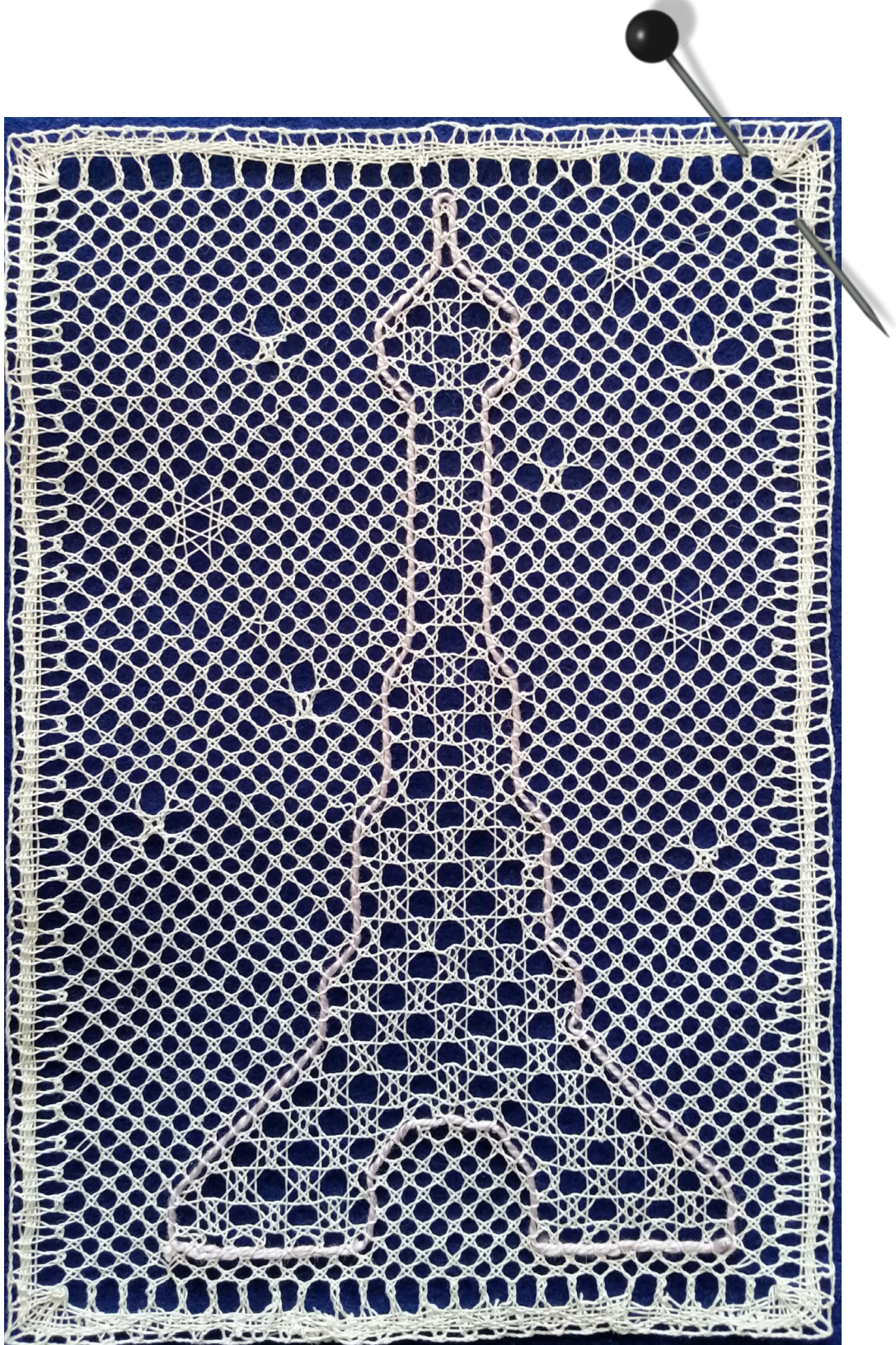


France 2015



Designed by Jenny Brandis

jenny@brandis.com.au

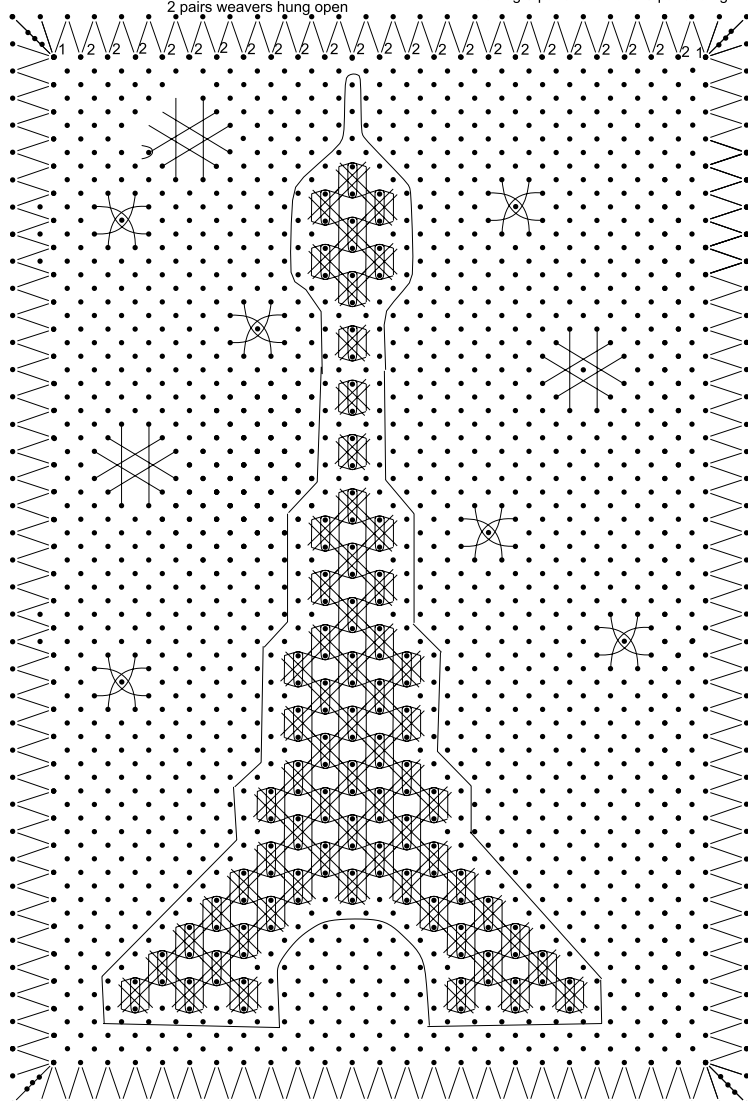
<https://www.etsy.com/au/shop/JennyBrandisLace>

Eiffel Tower by Jenny Brandis
in response to the Paris shootings
on Friday 13 Nov 2015

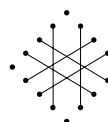
56 pairs main colour
1 pair gimp

NB: 6 passive pairs hung open through footside
making 3 pairs to left and 3 pairs to right

2 pairs weavers hung open



Cane Ground
see Cane Ground video on Youtube
at <https://youtu.be/RILsKCUMHmY>



Star Stitch
see Star Stitch Video on Youtube
at https://youtu.be/5stMP_eIGQc



2 Pin Roseground
see 2 Pin Roseground Video on Youtube
at <https://youtu.be/CxnJ1FB0Q4E>



Gimp



3 centre dots to separate
passives in footside at corner

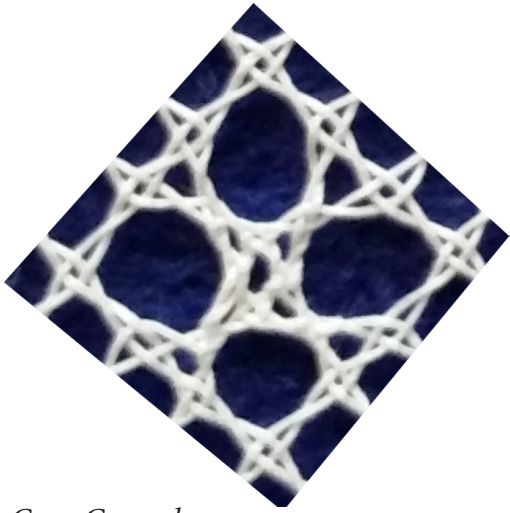
France 2015

Designed by Jenny Brandis

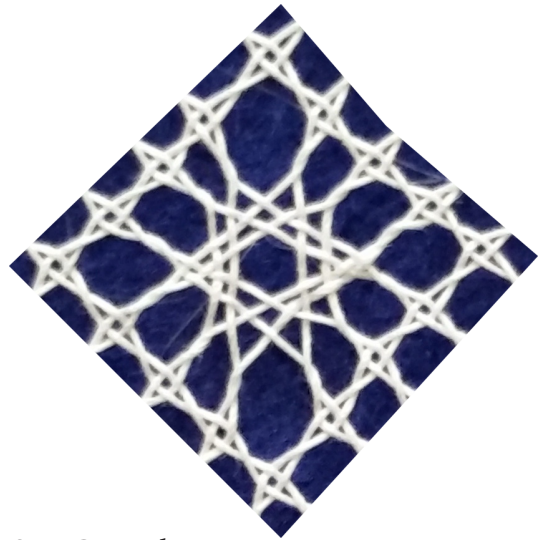
The tragic events of 13 November 2015 in Paris, France sparked a desire in me to show support for the families and friends of the innocent lives lost and damaged. That day impacted not only Paris, but all of France and sent shock across the world.

The Eiffel Tower is iconic and synonymous with France, so that became the basis of this design.

The design is offered here freely, please copy and share it. Make your own amendments and use colour to express yourself.



Cane Ground







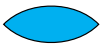



Star Ground



2 Pin Roseground

International Colour Code

GREEN		Half Stitch (CT)
PURPLE		Cloth Stitch (CTC) aka Linen or Whole Stitch
RED		Cloth Stitch with a Twist (CTCT) aka Whole or Double Stitch
BROWN		Honeycomb Stitch (CTT)
YELLOW		Gimp, Picot or other single thread element
BLUE		Plait aka Braid (CTCTCTCT)
		Leaf
		Tally

